

AECXXX

(this number will be assigned after full manuscript is accepted)

Full Manuscript Template for the 13th TSME-ICoME

F A Author¹, S B Author², and T C Author^{1,*}

¹Academic or Business Affiliation, Address, City, Zip Code, Country

²Academic or Business Affiliation, Address, City, Zip Code, Country

* Corresponding Author: E-mail

Abstract. These instructions give you guidelines for preparing a full manuscript for the 13th TSME International Conference on Mechanical Engineering. If you can open this file in Microsoft Word, you can use it as a template. Otherwise, use this document as an instruction set. The submitted manuscript must conform to this format in order to be published in the conference proceeding.

Keywords: Keyword1, Keyword2, Keyword3, Keyword4.

1. Introduction

This instruction gives you guidelines for preparing a full manuscript for the 13th TSME International Conference on Mechanical Engineering. Please use this document as a template and adhere strictly to the following guidelines and format to assure high quality of conference proceedings material. The full paper should be submitted to the paper submission system on the conference website.

The manuscript will go through a double blind review process, which means that both the reviewer and author identities are concealed from the reviewers, and vice versa, throughout the review process.

After the notification of full paper acceptance, the “camera-ready” manuscript will be required. The typography, layout and style are exactly the same as those used in this instruction. Papers which do not comply with it (especially in layout geometry and typesetting) will not be included in the proceedings. No final correction will be made by the publisher.

2. Preparation

Full paper should contain title, author name(s) and affiliation(s), abstract, main body which is the detail of research, acknowledgements and references. The number of pages is limited to **ten pages**.

The main body of full paper can be divided into sections and (optionally) subsections with subsubsections.

All fonts must be in Times or Times New Roman. Do not put page number, or headers and footers, in the manuscript. The size of the manuscript must be A4 and it must be typed in a single column with single spacing and the following margins.

Top margin	40 mm
Bottom margin	27 mm
Left margin	25 mm
Right margin	25 mm

3. Main Text Body

All fonts in heading and body text are set in 11 pt font.

3.1. Subsection

For Subsection heading should be in italic. The paragraph text follows on from the subsection heading should not be in italic.

3.1.1. Subsubsection.

The paragraph text follows on from the subsubsection heading but should not be in italic.

4. Figures

Each figure should have a brief caption describing it and, if necessary, a key to interpret the various lines and symbols on the figure.

4.1. Text in figures

Wherever possible try to ensure that the size of the text in your figures (apart from superscripts/subscripts) is approximately the same size as the main text (11 points).

4.2. Positioning figures

Individual figures should normally be centred but place two figures side-by-side if they will fit comfortably as it saves space. Place the figure as close as possible after the point where it is first referenced in the text. If there are a large number of figures it might be necessary to place some before their text citation. Figures should never appear within or after the reference list.

4.3. Figure captions/numbering

Captions should be below the figure and separated from it by a distance of 6 points—although to save space it is acceptable to put the caption next to the figure. Figures should be numbered sequentially through the text—‘Figure 1’, ‘Figure 2’ and so forth and should be referenced in the text as ‘Figure 1’, ‘Figure 2’, ... and not ‘Fig. 1’, ‘Fig. 2’, ..., ‘fig. 1’, ‘fig. 2’, ...

4.4. Examples

All figures should be placed after their first mention in the text. The example of a figure with its caption is shown in Figure 1. A caption should finish with a full stop (period).

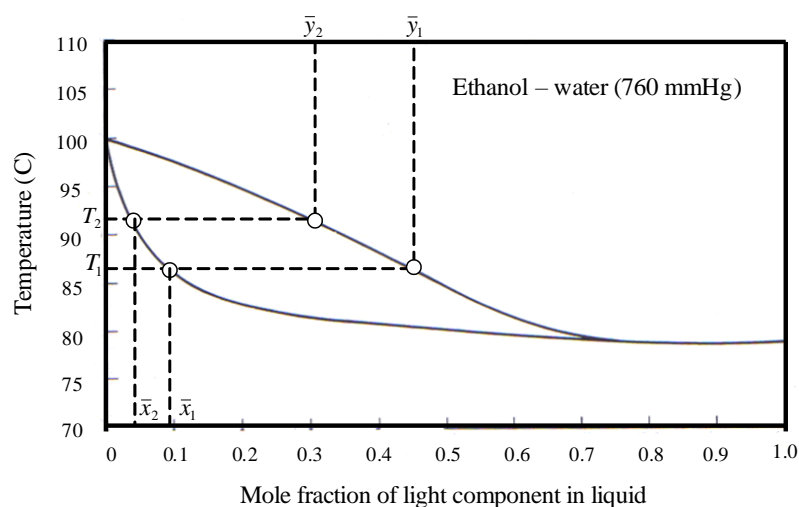


Figure 1. Vapor-liquid equilibrium of binary mixture at constant pressure.

5. Tables

Note that as a general principle, for large tables font sizes can be reduced to make the table fit on a page or fit to the width of the text.

5.1. Positioning tables

Tables should be centred unless they occupy the full width of the text.

5.2. Table captions/numbering

Tables should be numbered sequentially throughout the text and referred to in the text by number ‘Table 1’, ‘Table 2’, ... and not ‘Tab. 1’, ‘Tab. 2’, ..., ‘tab. 1’, ‘tab. 2’, Captions should be placed at the top of the table and should have a full stop (period) at the end. Except for very narrow tables with a wide caption (see examples below) the caption should be the same width as the table.

5.3. Rules in tables

Tables should have only horizontal rules and no vertical ones. Generally, only three rules should be used: one at the top of the table, one at the bottom, and one to separate the entries from the column headings. Table rules should be 0.5 points wide.

5.4. Examples

Because tables can take many forms, it is difficult to provide detailed guidelines; however, the following examples (Tables 1 and 2) demonstrate our preferred styles.

Table 1. A simple table.

Distance (m)	Velocity (m/s)
100	23.56
150	34.64
200	23.76
250	27.9

Table 2. A table with headings spanning two columns and containing notes^a.

Nucleus	Thickness (mg/cm ²)	Composition	Separation energies	
			□, n (MeV)	□, 2n (MeV)
¹⁸¹ Ta	19.3±0.1 ^b	Natural	7.6	14.2
²⁰⁸ Pb	3.8±0.8 ^c	99% enriched	7.4	14.1
²⁰⁹ Bi	2.6±0.01 ^c	Natural	7.5	14.4

^a Notes are referenced using alpha superscripts.

^b Self-supporting.

^c Deposited over Al backing.

6. Equations and mathematics

6.1. Fonts in Equation Editor (or MathType)

Make sure that your Equation Editor or MathType fonts, including sizes, are set up to match the text of your document.

6.2. Examples

Some examples are as follows:

$$\phi_k(\mathbf{r}) = (2\pi)^{2/3} \exp(i\vec{k} \cdot \mathbf{r}) \quad (1)$$

$$Y(h\nu) = \frac{1}{q} \frac{(h\nu)^2}{[(h\nu_r)^2 - (h\nu)^2]^2 + (\hbar\Delta\omega_{1/2})^2 (h\nu)^2} \int_{E\tau-E_V-\Delta\phi}^{\infty} \frac{[E + (E_v - h\nu)]^{1/2}}{[E + (E_v - E_-)]^{1/2}} \frac{E}{\exp[(E - E_m)/kT] + 1} dE \quad (2)$$

6.3. Equation numbering

Equations may be numbered sequentially throughout the text (i.e., (1), (2), (3),...) or numbered by section (i.e., (1.1), (1.2), (2.1), ...) depending on the author's personal preference. In articles with several appendices equation numbering by section is useful in the appendices even when sequential numbering has been used throughout the main body of the text: for example, A.1, A.2 and so forth. When referring to an equation in the text, always put the equation number in brackets—e.g. ‘as in Equation (2)’ or ‘as in Equation (2.1)’—and always spell out the word ‘Equation’ in full, e.g. ‘if Equation (5) is factorized’ or ‘Eq.’ in short, e.g. ‘if Eq. (5) is factorized’; do not use abbreviations such as ‘eqn.’, ‘eq.’, or ‘Eqn.’.

7. Full Manuscript Submission

The manuscript must be in single files, using both PDF format and MS-Word for submission. Submit the manuscript without the authors' names and affiliation (Blinded). After the notification of full paper acceptance, the “camera-ready” manuscript will be required in MS-Word format. The name of the submission file must be a paper ID, for example “ICOME-2023-0458”.

Please make sure that your file is printable and the printout is fine before processing the online-submission. Author(s) are responsible for the completeness of their manuscript file. The committee will not accept the incomplete file.

8. Conclusion

The guidelines for preparing a full manuscript for the 13th TSME-ICoME is provided. Please visit <https://www.icome.tsme.org/icome2023/> for more information.

9. Acknowledgments

Authors wishing to acknowledge assistance or encouragement from colleagues, special work by technical staff or financial support from organizations should do so in an unnumbered Acknowledgments section immediately following the last numbered section of the paper.

10. References

The relevant works must be cited and listed as references at the end of the paper, in order of citation. They should be chronologically referred in the text by Arabic numerals enclosed in square brackets, e.g. [1], [1, 2], [1-3]. The reference list should be set in the same type face as the body of the text. Apply APA format for writing the references. Some examples of the references are illustrated as follows:

Article in Journals

- [1] Strite, A. S., & Morkoç, H. (1992). GaN, AlN, and InN: a review. *Journal of Vacuum Science & Technology B: Microelectronics and Nanometer Structures Processing, Measurement, and Phenomena*, 10(4), 1237-1266.
- [2] Nakamura, S., Senoh, M., Nagahama, S. I., Iwasa, N., Yamada, T., Matsushita, T., ... & Sugimoto, Y. S. Y. (1996). InGaN-based multi-quantum-well-structure laser diodes. *Japanese Journal of Applied Physics*, 35(1B), L74.

Proceedings

- [3] Caplar, R., & Kulisic, P. (1973). A technical and economic analysis of three large scale biomass combustion plants in the UK. In *Applied Energy Proc. Int. Conf. on Nuclear Physics (Munich)*.-Amsterdam: North-Holland/American Elsevier (Vol. 1, p. 517).

Books

- [4] Sze, S. M., Li, Y., & Ng, K. K. (2021). *Physics of semiconductor devices*. John wiley & sons.

Book Chapters

- [5] Kuhn, T. (1998). Density matrix theory of coherent ultrafast dynamics. *Theory of transport properties of semiconductor nanostructures*, 173-214.